

WOOD



HEAT & GLO

No one builds a better fire



Premier
Woodburning Fireplaces



Photo rights: Andrew Twort & RedCover.com



Classic
& classy

The **Exclaim** series offers viewing areas of magnificent proportions. With a choice of a traditional or herringbone brick interior and an elegant array of door options, our clean-faced fireplaces can turn any living area from casual to spectacular.

Exclaim-36 shown with standard parting mesh and traditional refractory.

Available in 36", 42" and 50" sizes.





Our line of clean-faced wood burning fireplaces will make their mark in stone. We've created an exclusive offering of fireplaces designed to be finished right up to the doors with your favorite stone, marble, granite or tile. The result is a classic masonry look without all the fuss.

The **Rutherford** wood-burning fireplace offers homeowners and custom builders an authentic masonry look without the expense of a site-built masonry fireplace. The Rutherford is designed to be installed flush to the floor without additional support footings. Choose traditional or herringbone firebrick colored panels with true masonry grout lines.

Rutherford-50 shown with herringbone refractory and mesh screen.

True Masonry Appeal

Turn a living area from casual to spectacular



North Star Powerful & Efficient

North Star, approved to EPA-Phase II standards, meets the strictest environmental standards in the country with low particulate matter emissions of only 3.25 grams per hour. This allows you to enjoy a beautiful, roaring fire and be a friend to the environment at the same time. Just as importantly, we've created a ruggedly traditional look that is matched only by its heating capacity.

Capable of producing up to 51,000 Btu/Hour and boasting a 77.8% efficiency rating, the North Star will warm you up on the coldest of nights. And with two standard fans and up to two optional Heat-Zone kits, it can heat up other areas of the home as well.

NorthStar-BK Shown with black cabinet style doors



Royal Hearth Elegant & Traditional

A clean face, radiant heating fireplace, the RH-36 and RH-42 will fit into any style of room. It's designed to allow facings such as tile, marble, granite or brick to come right down to the opening, providing a real masonry fireplace experience.

RH-36 Shown with Fairfield mantel and green granite





Energy Master Convection & Comfort

With our line of heat-circulating fireplaces, the heat truly is on. The Energy Master Series boast efficient high heat outputs, all encapsulated within an elegant fireplace. The **EM-415** provides ample heat to warm up your room.

The EM-485T takes it to a new level by offering a bountiful view of the fire and, like its smaller brother the EM-415, pumps out plenty of heat to make it cozy on the coldest of nights.

EM-36 Shown with custom stone and mantel.

Multi-Sided Views & More Views

When you're looking for a real show-stopper for your home, you can look again. Our multi-sided woodburning fireplaces allow for enjoyment of the crackling fire from different areas of the room, or different rooms. Available in See-Thru, Bay and Pier models.

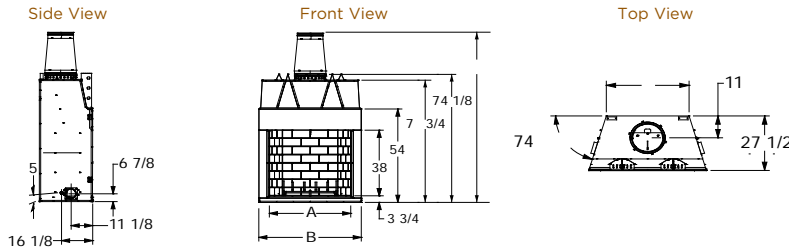
Pier-40 Whether as a room divider or as a centerpiece to your home, the Pier-40 is spectacular from any point of view.



Rutherford Specifications

MODEL	FRONT HEIGHT		FRONT WIDTH		BACK WIDTH		DEPTH		GLASS SIZE
	Actual	Framing	Actual	Framing	Actual	Framing	Actual	Framing	
RUTHERFORD-42	74-1/8	74-1/2	52-7/8	53-7/8	37-1/8	53-7/8	27-1/2	28-3/8	42 x 38
RUTHERFORD-50	74-1/8	74-1/2	60-7/8	61-7/8	45-1/8	61-7/8	27-1/2	28-3/8	50 x 38

Rutherford Models



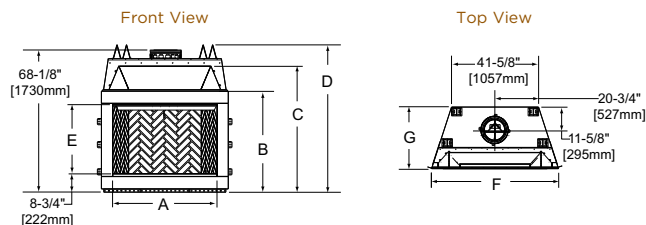
MODEL	A	B	C	D
RUTHERFORD-42	42	52-7/8	37-1/8	97-1/2*
RUTHERFORD-50	50	60-7/8	45-1/8	N/A

*Transition piece included on Rutherford 42 only

Exclaim Specifications

MODEL	FRONT HEIGHT		REAR HEIGHT		FRONT WIDTH		BACK WIDTH		DEPTH		GLASS SIZE
	Actual	Framing	Actual	Framing	Actual	Framing	Actual	Framing	Actual	Framing	
Exclaim-36	49-5/8	49-3/4	59-1/4	60	44-1/2	45-1/2	28-5/8	45-1/2	27-1/2	28	36 x 28-1/2
Exclaim-42	49-5/8	49-3/4	59-1/4	60	50-1/2	51-1/2	34-1/2	51-1/2	27-1/2	28	42 x 28-1/2
Exclaim-50	60-1/4	61	60-1/4	61	60-5/8	61-5/8	41-5/8	61-5/8	29-1/2	30-3/8	50 x 33

Exclaim Models 36 - 42 -50



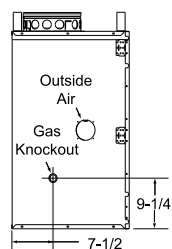
MODEL	A	B	C	D	E	F	G
Exclaim 36	36	43-1/8	49-5/8	59-1/4	28-1/2	44-1/2	27-1/2
Exclaim 42	42	43-1/8	49-5/8	59-1/4	28-1/2	50-1/2	27-1/2
Exclaim 50	50	48-3/8	60-1/4	70-1/2	33	60-5/8	29-1/2

Royal Hearth Specifications

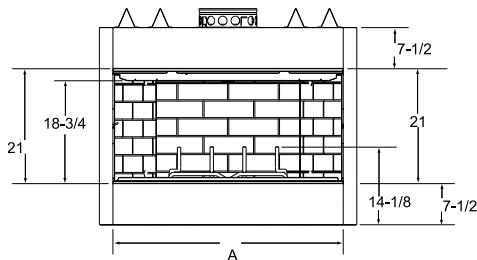
MODEL	HEIGHT		FRONT WIDTH		BACK WIDTH		DEPTH		GLASS SIZE
	Actual	Framing	Actual	Framing	Actual	Framing	Actual	Framing	
RH-36	39-1/2	40-1/4	41	42	23-3/4	42	21-3/8	21-1/2	21 x 36
RH-42	39-1/2	40-1/4	47	48	29-3/4	48	21-3/8	21-1/2	21 x 42

Drawings below represent the RH-36 and RH-42 combined.

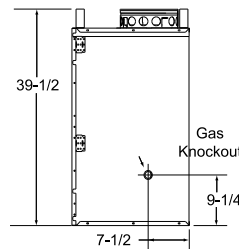
Side View



Front View

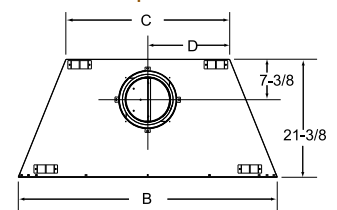


Side View



MODEL	A	B	C	D	E
RH-36	36	41	23-3/4	11-7/8	42
RH-42	42	47	29-3/4	14-7/8	48

Top View



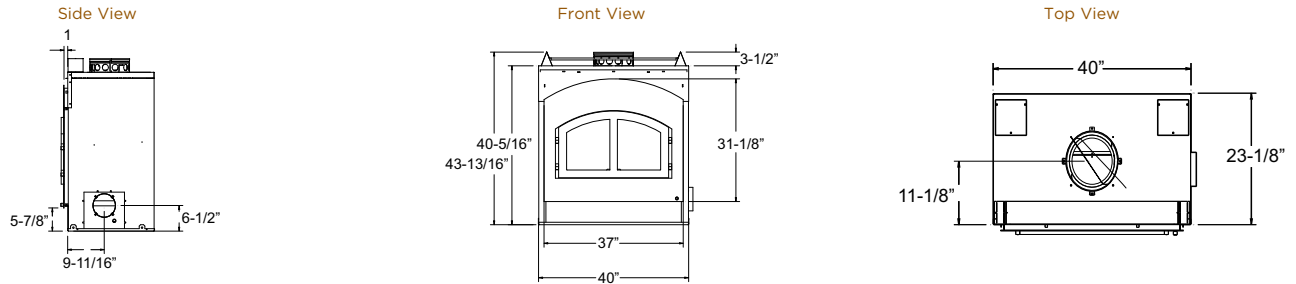
Dimensions above are in inches. Reference dimensions only. We recommend measuring individual units at installation. Assumes the use of 1/2" Sheetrock. NOTE: Non-combustible material is allowed over this dimension. Make sure you do NOT cover the decorative door opening.

Refer to installation manual for detailed specifications on installing this product. Heat & Glo reserves the right to update units periodically. Actual product appearance, including flame, may differ from product images.

North Star Specifications

MODEL	FRONT HEIGHT		REAR HEIGHT		FRONT WIDTH		BACK WIDTH		DEPTH		GLASS SIZE
	Actual	Framing	Actual	Framing	Actual	Framing	Actual	Framing	Actual	Framing	
North Star*	43-13/16	43-7/8	43-13/16	43-7/8	40	42	40	42	23-1/8	24	29-1/4 x 16-3/4

Model North Star

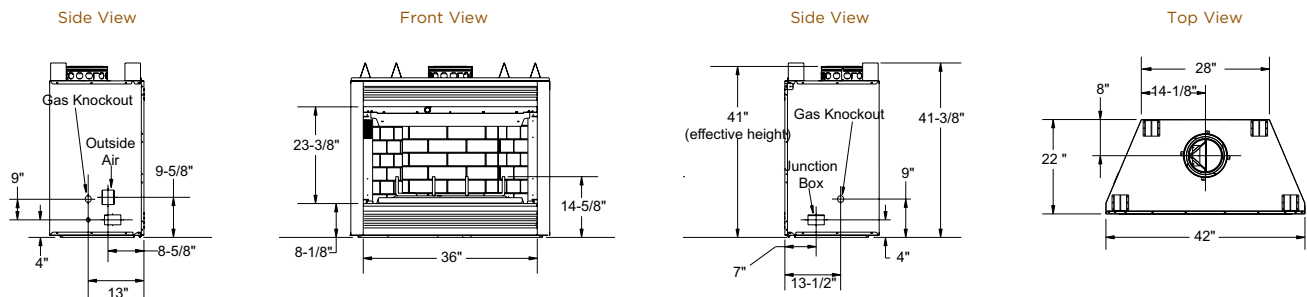


*Tested to EPA Phase II Standards, the North Star fireplace meets the strictest environmental standards for woodburning fireplaces and can be used in areas where conventional woodburning appliances are restricted or banned.

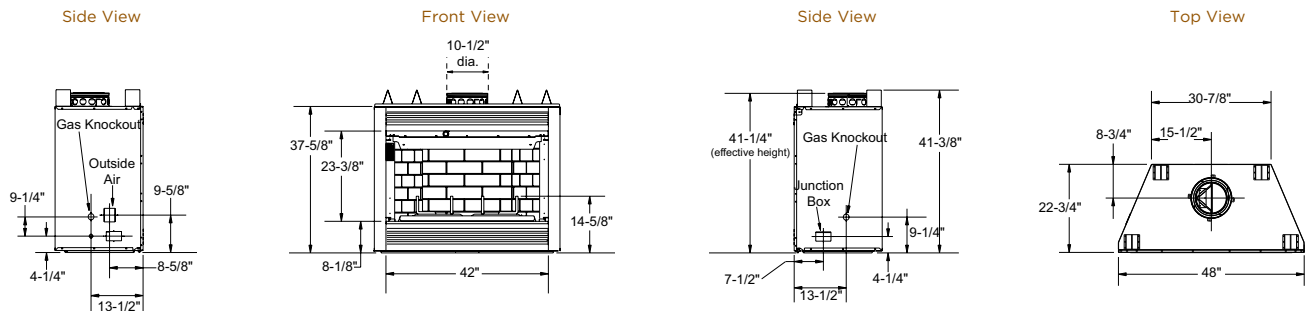
Energy Master Specifications

MODEL	FRONT HEIGHT		REAR HEIGHT		FRONT WIDTH		BACK WIDTH		DEPTH		GLASS SIZE
	Actual	Framing	Actual	Framing	Actual	Framing	Actual	Framing	Actual	Framing	
EM-415	41-3/8	41-1/2	41-3/8	41-1/2	42	43	28-1/4	43	22	23	36 x 23-1/2
EM-485T	41-3/8	41-7/8	41-3/8	41-7/8	48	49	30-7/8	49	22-3/4	23-1/4	42 x 23-1/2

Energy Master Model EM-415



Energy Master Model EM-485T



Dimensions above are in inches. Reference dimensions only. We recommend measuring individual units at installation. Assumes the use of 1/2" Sheetrock. NOTE: Non-combustible material is allowed over this dimension. Make sure you do NOT cover the decorative door opening.

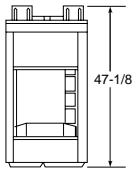
Refer to installation manual for detailed specifications on installing this product. Heat & Glo reserves the right to update units periodically. Actual product appearance, including flame, may differ from product images.

Pier and Bay Specifications

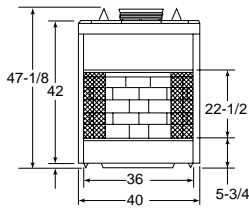
MODEL	FRONT HEIGHT		REAR HEIGHT		FRONT WIDTH		BACK WIDTH		DEPTH		GLASS SIZE
	Actual	Framing	Actual	Framing	Actual	Framing	Actual	Framing	Actual	Framing	
PIER-40	47-1/8	47-5/8	41-3/8	47-5/8	40	40	40	40	24	23	36 x 20-7/8
BAY-40	47-1/8	47-5/8	41-3/8	47-5/8	40	39	40	39	24-1/2	23-1/2	36 x 20-7/8

Models Bay-40 and Pier-40

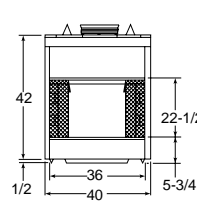
End View - Bay 40



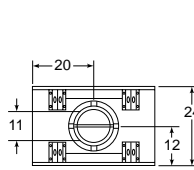
Front View - Bay 40



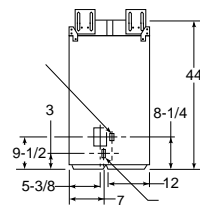
Front View - Pier 40



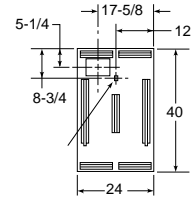
Top View - Both Models



End View - Pier 40



Bottom View - Bay 40



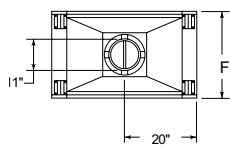
36

HST Specifications

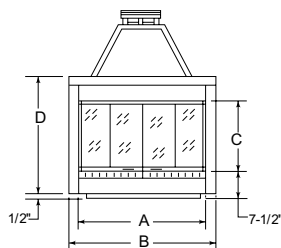
MODEL	FRONT HEIGHT		REAR HEIGHT		FRONT WIDTH		BACK WIDTH		DEPTH		GLASS SIZE
	Actual	Framing	Actual	Framing	Actual	Framing	Actual	Framing	Actual	Framing	
HST-42D	41	41-1/2	41	41-1/2	40	41	40	41	24	23	36 x 20-1/2
HST-48D	39-1/2	39-3/4	39-1/4	39-3/4	47	48	47	48	28	27	42 x 23

Models HST-42D and HST-48D

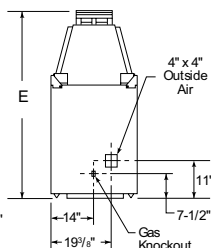
Top View



Front View



Side View



MODEL	DIMENSION					
	A	B	C	D	E	F
HST-42D	36	40	20-7/8	41-1/2	47-1/4	24
HST-48D	42	47	23	38-1/2	58-7/8	28

Dimensions above are in inches. Reference dimensions only. We recommend measuring individual units at installation. Assumes the use of 1/2" Sheetrock. NOTE: Non-combustible material is allowed over this dimension. Make sure you do NOT cover the decorative door opening.

Refer to installation manual for detailed specifications on installing this product. Heat & Glo reserves the right to update units periodically. Actual product appearance, including flame, may differ from product images.

Limited Lifetime Warranty

Covered by Heat & Glo 20-year Buyer Protection Plan.

HEAT & GLO

For complete information and valuable assistance on this series, please contact us at:



Heat & Glo

A brand of Hearth & Home Technologies Inc.

20802 Kensington Boulevard, Lakeville, MN 55044

(888) 427-3973 (952) 985-6000

Email: info@heatnglo.com

Web: heatnglo.com

HNG-1029-0508